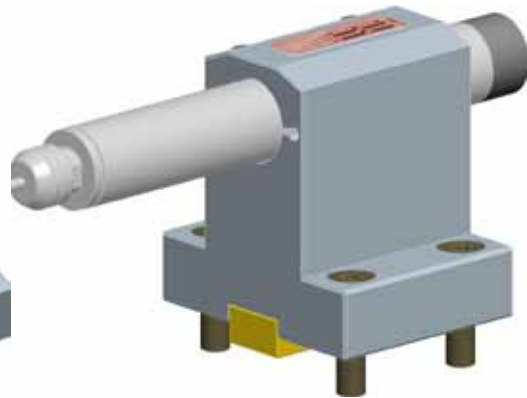
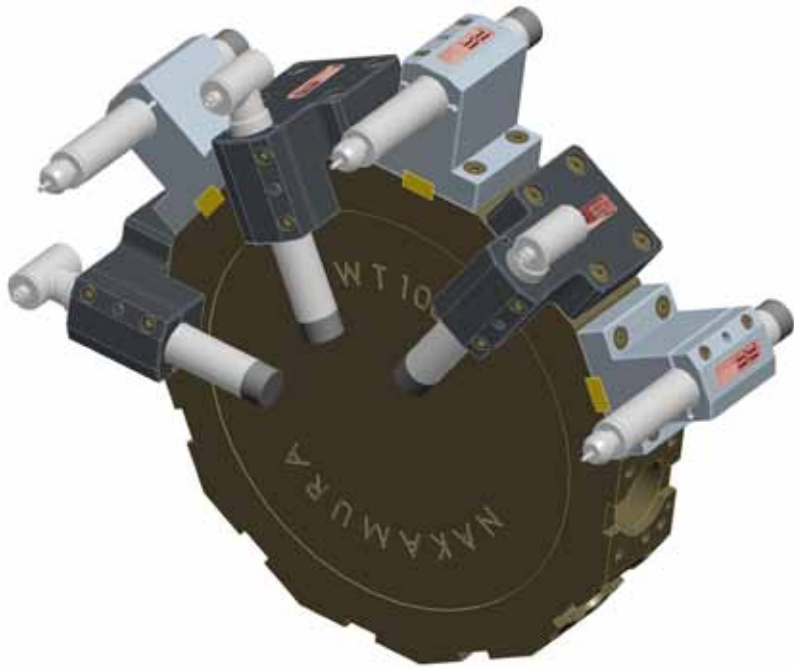
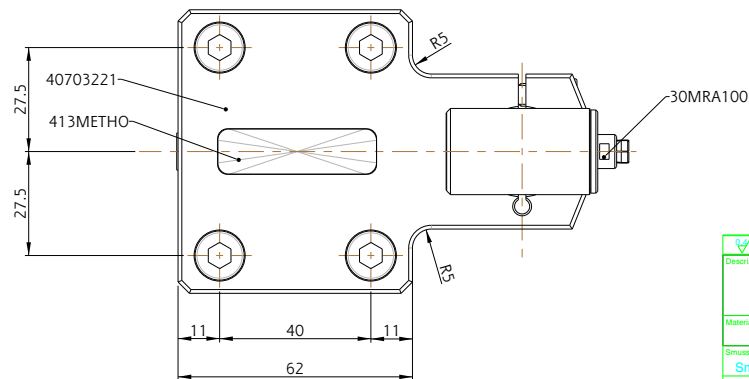
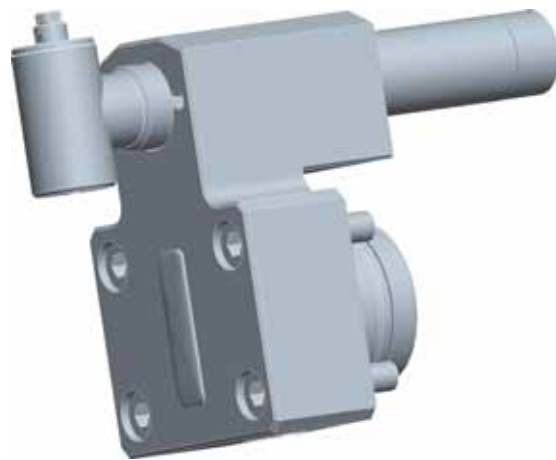
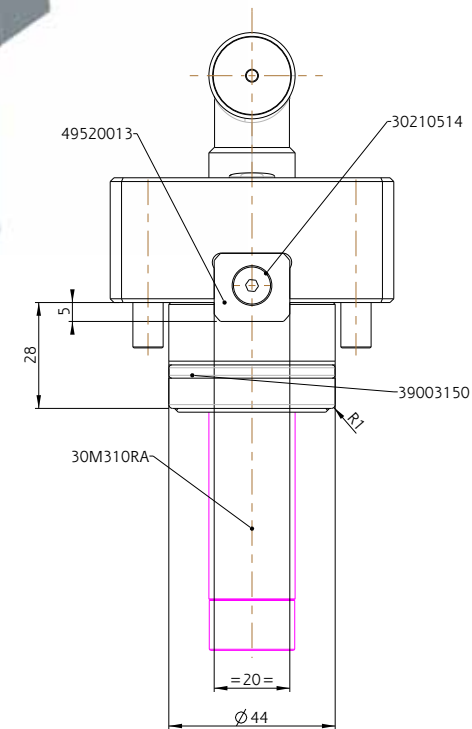
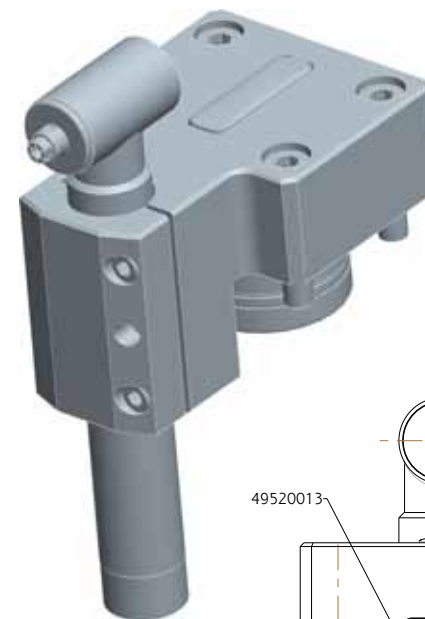
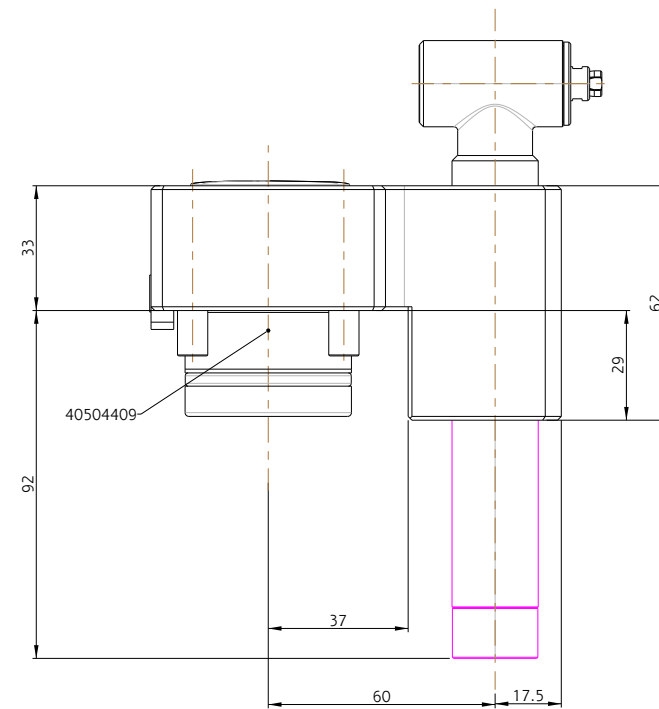
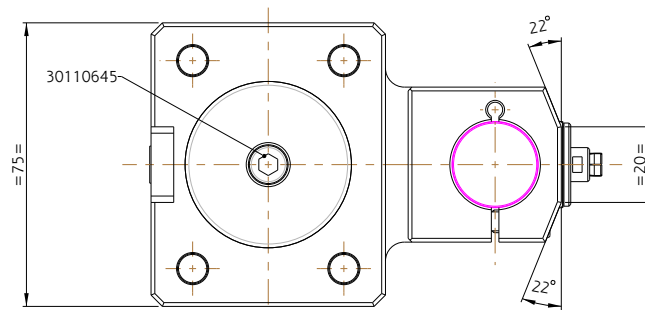
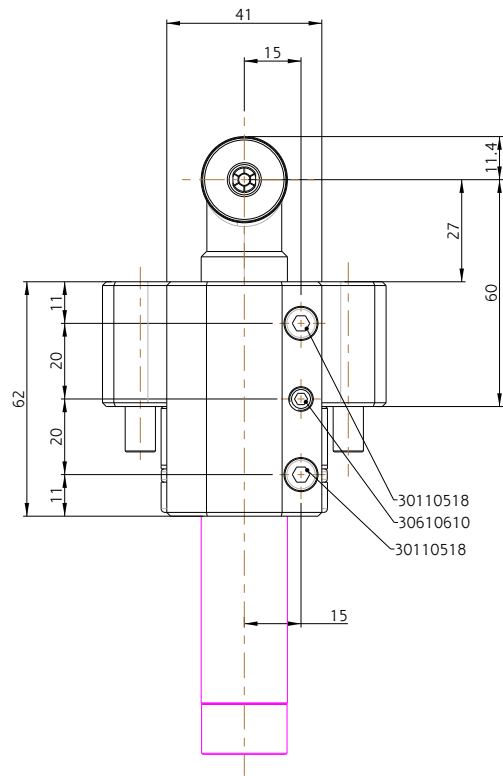




Applicazioni speciali con supporti Nakanishi
Special application with Nakanishi products

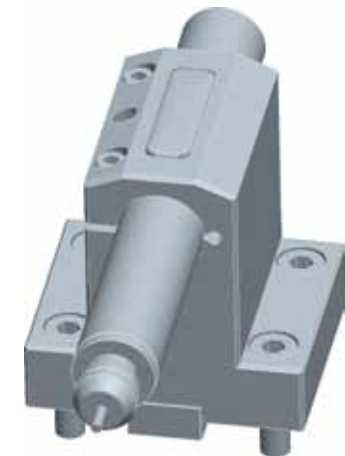
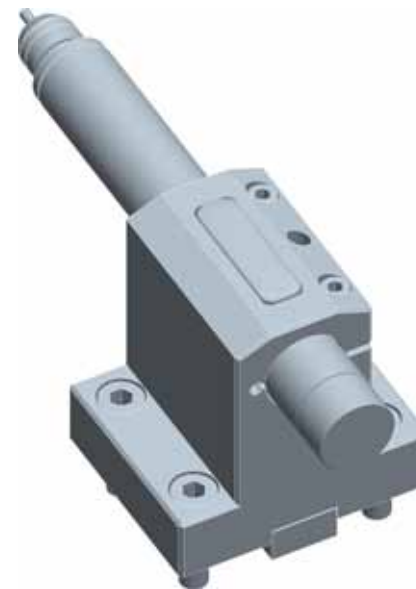
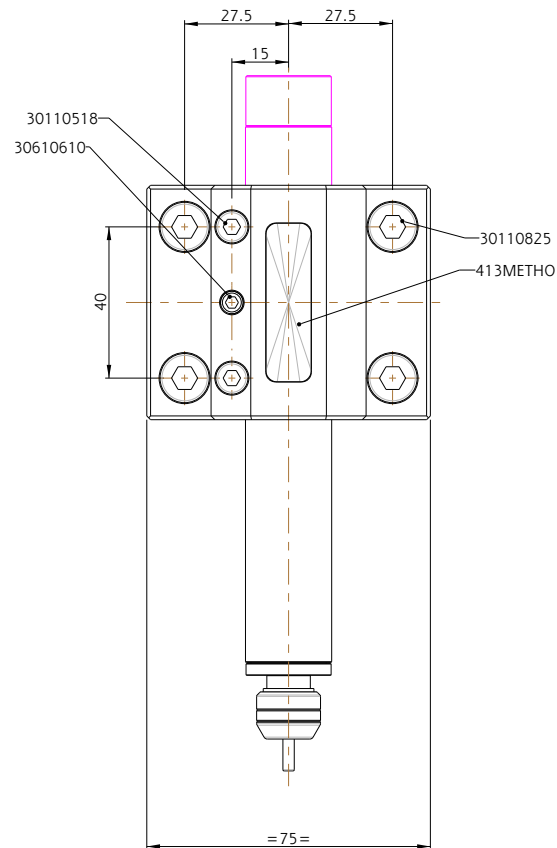
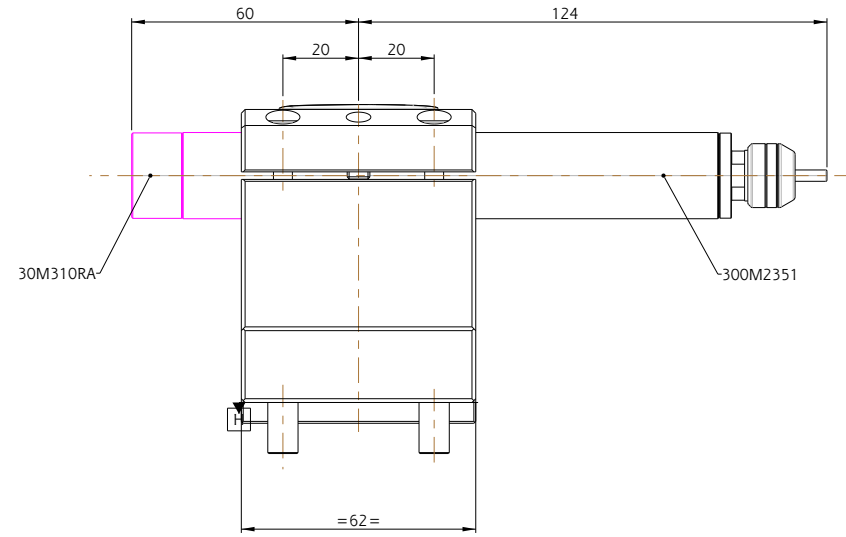
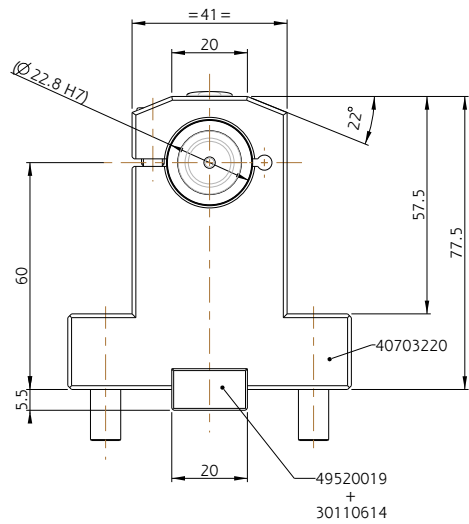




X = Sovrametallo per rettifica in decimi di mm. Codice di esempio: H1.....		Descrizione <i>Type</i> AIR DRIVEN HOLDER FACE 30.000 rpm WT-100		Data <i>Date</i> 22-Oct-08		Codice <i>Code</i> 5.07.03.22.1	
Materiale <i>Material</i> Sm.0.5x45[®]		Trattamento termico <i>Thermal treatment</i> Valvassori		Durezza <i>Hardness</i> 1.6/0.8		Modifiche <i>Updates</i> Pro. Engineer Violante 2.0	
Simbolo gen. <i>Charter</i> 0,1mm		Scala <i>Scale</i> 1:1		Disegnato <i>Drawn</i> Verificato <i>Check</i>		Disegno originale in formato A2	
Peso [Kg] <i>Weight</i> 43592.748		Unità di misura <i>Unit</i> mm		Rugosità <i>Surface finish</i> 1.6/0.8		I DATI CONTENUTI POTRANNO SUBIRE VARIAZIONI SENZA PREAVVISO DATA ARE SUBJECT TO TECHNICAL MODIFICATIONS WITHOUT NOTICE	



I DATI CONTENUTI POTRANNO SUBIRE VARIAZIONI SENZA PREAVVISO
 DATA ARE SUBJECT TO TECHNICAL MODIFICATIONS WITHOUT NOTICE



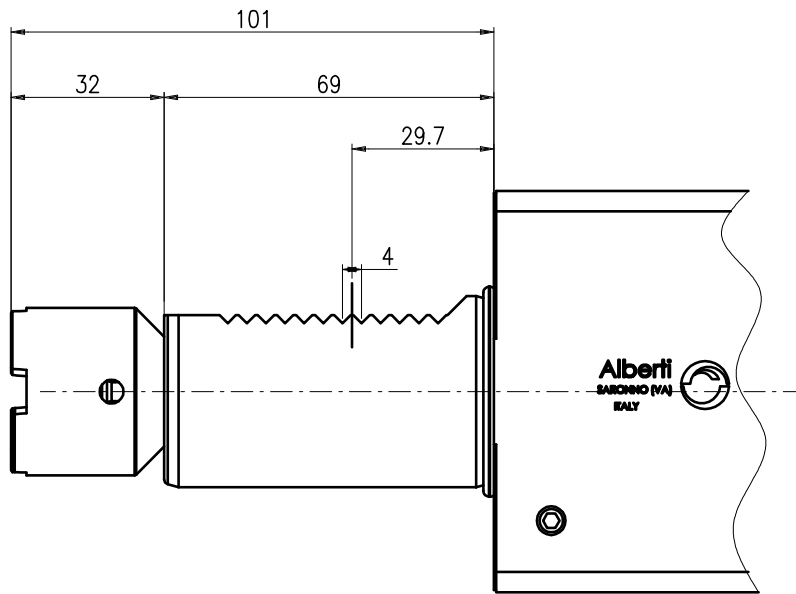
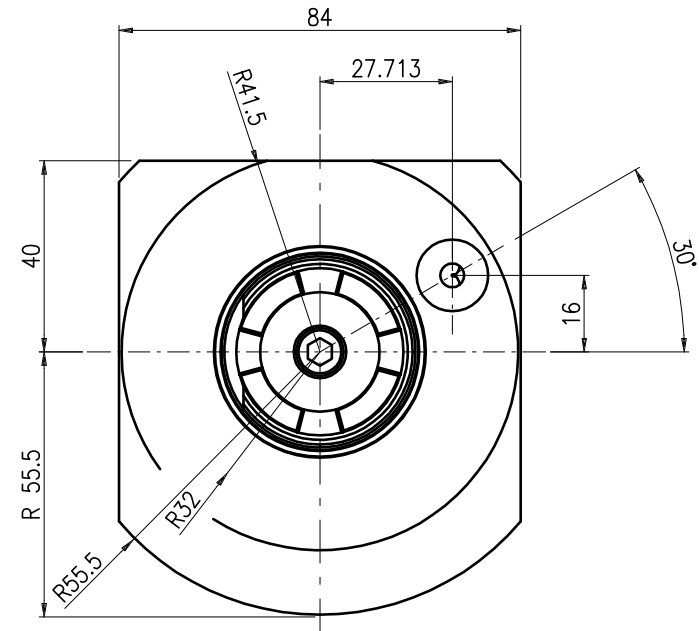
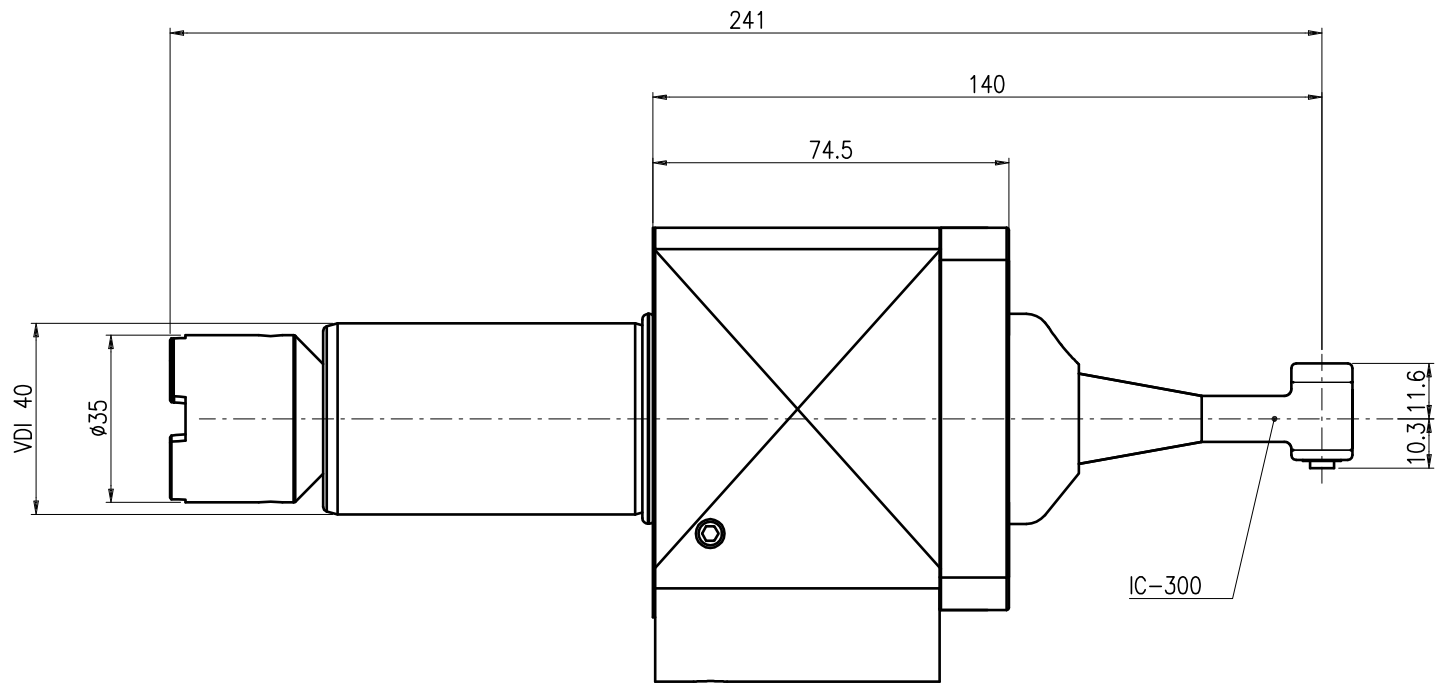
X = Sovrametallo per rettifica in decimi di mm. Codice di esempio: H1.....					
AIR DRIVEN HOLDER CROSS 30.000 rpm FOR WT-100					
Materiale Material		Trattamento termico Thermal treatment		Durezza Hardness	
Smusso gen. Chamfer	Toll. gen. Gen.tol.	Scala Scale	Disegnato Drawn	Verificato Check	Data Date
Sm.0.5x45°	0,1mm	1:1	Valvassori		21-Oct-08
Peso [Kg] Weight	Unità di misura Unit	Rugosità Surface finish	Modifiche Updates Pro Engineer Wildfire 3.0		
846.260	mm	1.6/ 0.8/ √	Codice Cód 5.07.03.22.0		
A TERMINI DI LEGGE È VIETATA LA RIPRODUZIONE DI QUESTO DISEGNO SENZA LA NOSTRA AUTORIZZAZIONE. ACCORDING TO THE LAW IT IS PROHIBITED THE REPRODUCTION OF THIS DRAWING WITHOUT OUR AUTHORIZATION.			I DATI CONTENUTI POTRANNO SUBIRE VARIAZIONI SENZA PREAVVISO. DATA ARE SUBJECT TO TECHNICAL MODIFICATIONS WITHOUT NOTICE.		



Via E. Lorenzini, 47 21047 SARCHESIOVA
e-mail: info@albertumbero.it
Tel. (02) 96703588 (2 linee r.a.) FAX (02) 96703600

Disegno originale in formato A2

ABCDEFGHIJLMN



Disegno per approvazione
Approval Drawing

Approvato / Approved

Data / Date/..../....

Firma / Signature

Note:

Da definire / Redefine

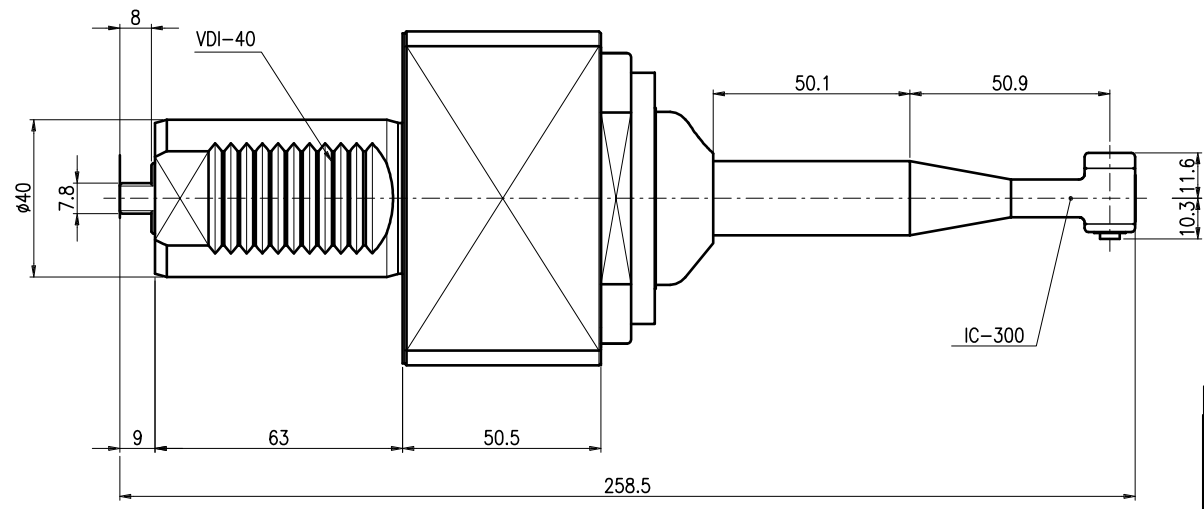
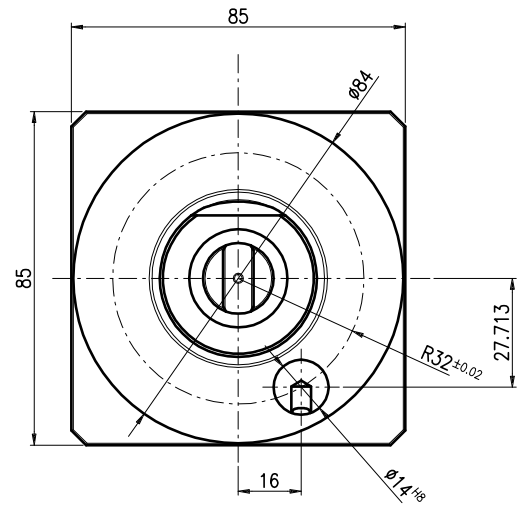
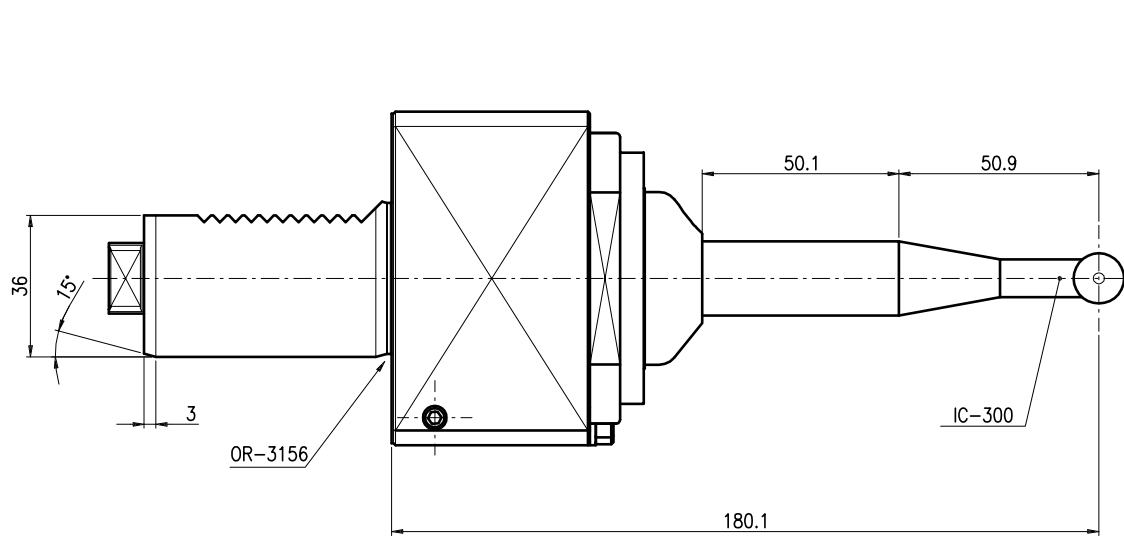
Data / Date/..../....

Firma / Signature

Note:

X-sovrametallo per rettifica in decimi di mm.

MOTORIZZATO MA-IC300		OKUMA LB-400		Alberti Umberto <small>Teste angolari e motorizzazioni</small> <small>Via E.H.GRIEG n°7 21047 SARONNO(VA)</small> <small>e-mail: alberti@net-one.it</small> <small>Tel. (02) 96703588 (2 linee r.a.) FAX (02) 96703620</small>	
MODIFICHE	MATERIALE	TRATTAMENTO	FIRMA	VERIF.	DATA
			<i>Pinini</i>		22.01.09
SMUSSARE SPIGOLI	TOLL. GENER.	SCALA	RUGOSITA'	NUMERO DISEGNO - CODICE	
		1:1		9.91.M.40.00	



Disegno per approvazione
Approval Drawing

Approvato / Approved

Data / Date/..../....

Firma / Signature

Note:

Da definire / Redefine

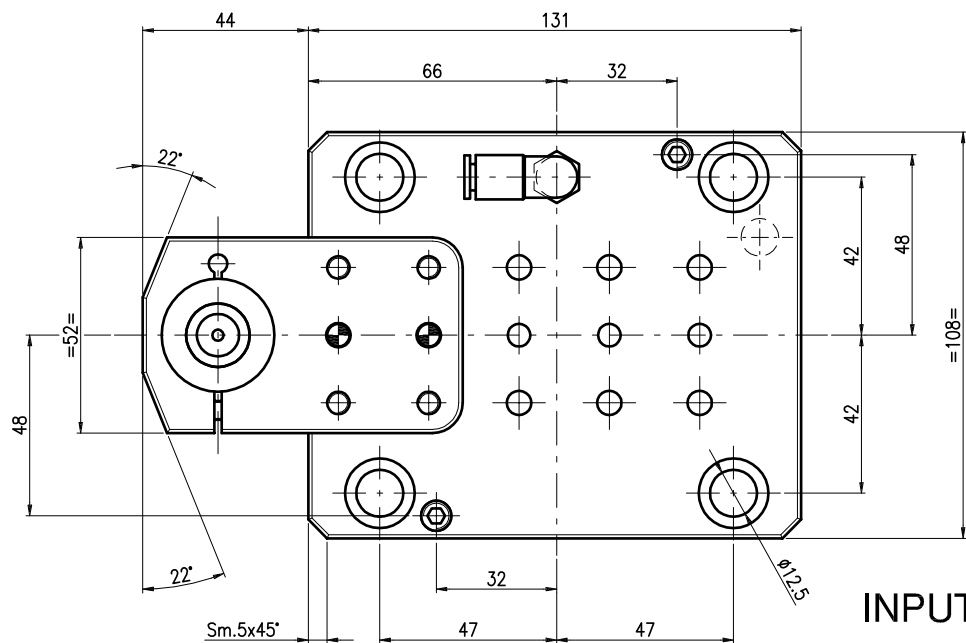
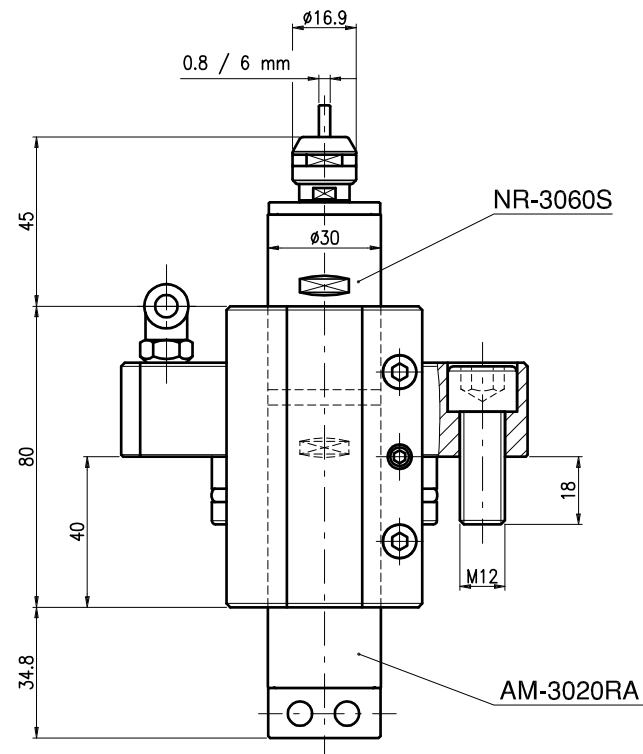
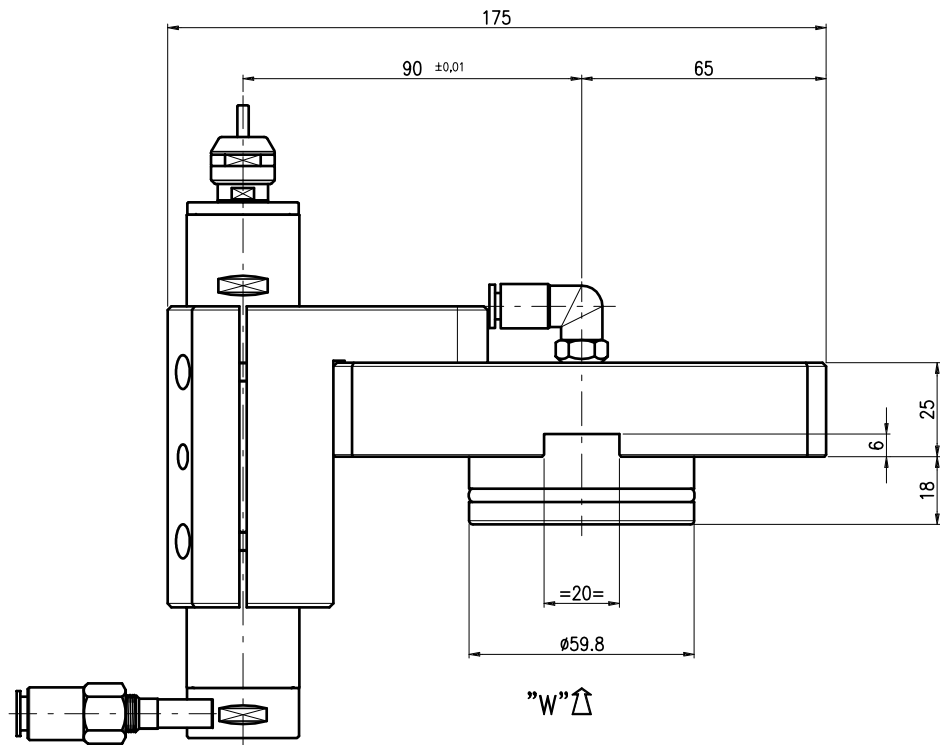
Data / Date/..../....

Firma / Signature

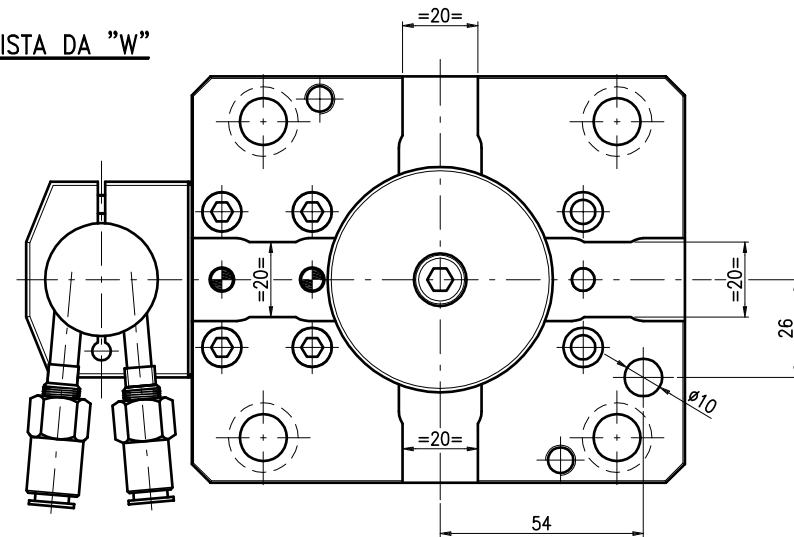
Note:

0.4x X=sovrametallo per rettifica in decimi di mm.

MA-IC300 VDI-40 DIN 1809				 Alberti Umberto Teste angolari e motorizzazioni Via E.H.GRIEG n°7 21047 SARONNO(VA) e-mail: alberti@net-one.it Tel. (02) 96703586 (2 linee r.a.) FAX (02) 96703620		
MODIFICHE	MATERIALE	TATTAMENTO	FIRMA	VERIF.	DATA	REF. ORD.
			c.b.		26-06-09	
SMUSSARE SPIGOLI	TOLL. GENER.	SCALA	RUGOSITA'	NUMERO DISEGNO - CODICE		
		1:1		9.91.M.40.01		



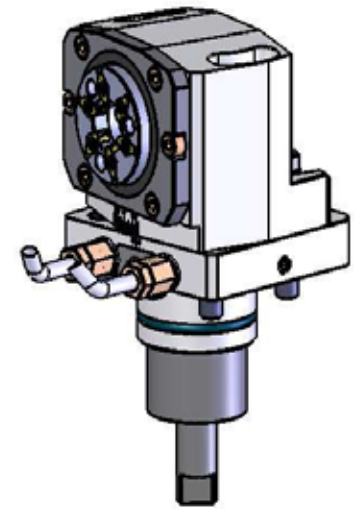
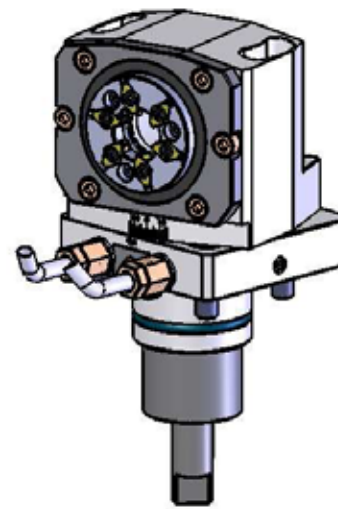
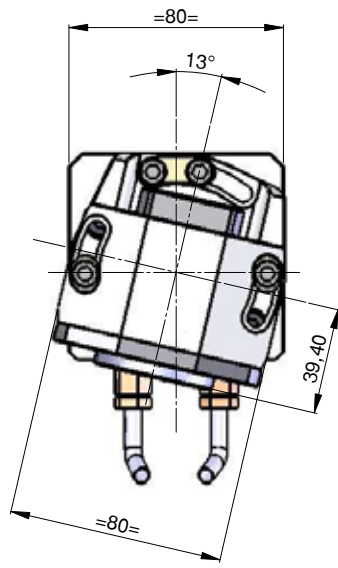
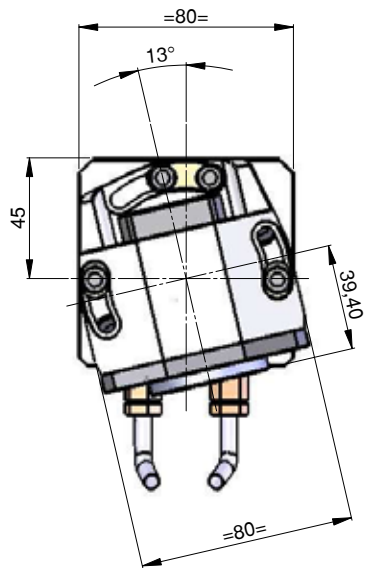
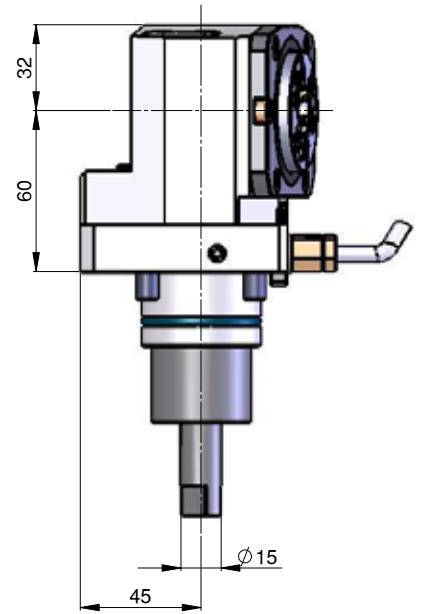
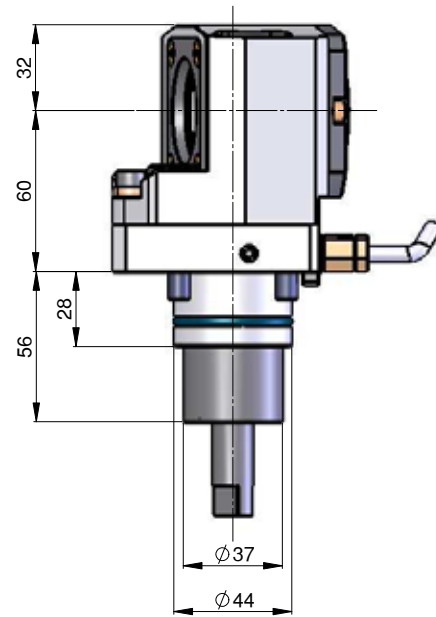
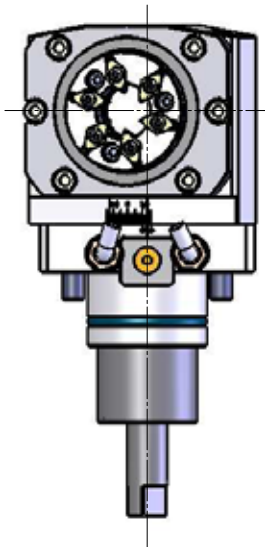
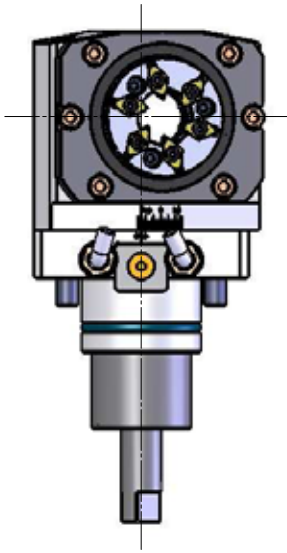
VISTA DA "W"



INPUT - 18.000 GIRI / RPM
 OUTPUT - 18.000 GIRI / RPM

0.4^x X-sovrametallo per rettifica in decimi di mm.

SUPPORTO ASSIALE Ø30 PER MANIPOLO NSK MORI SEIKI NL				Alberti Umberto			
<small>Teste angolari e motorizzazioni Via E.H.GREGG n°7 21047 SARONNO(VA) e-mail: alberti@net-one.it Tel. (02) 96703566 (2 linee r.a.) FAX (02) 96703620</small>						<small>VERIF. DATA REF. ORD.</small> Carnovale 03/02/09	
MODIFICHE	MATERIALE	TATTAMENTO	FIRMA	VERIF.	DATA	REF. ORD.	
SMUSSARE SPIGOLI	TOLL. GENER.	SCALA	RUGOSITA'			NUMERO DISEGNO - CODICE 9.07.1.4.30.1	



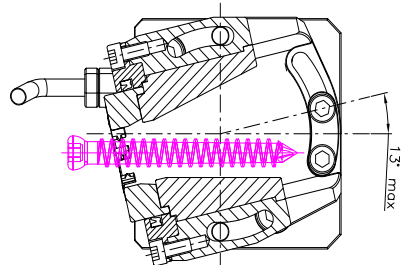
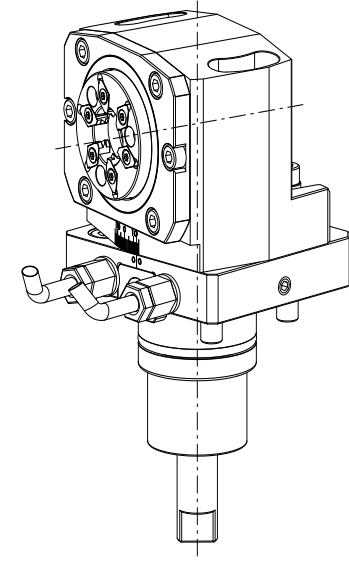
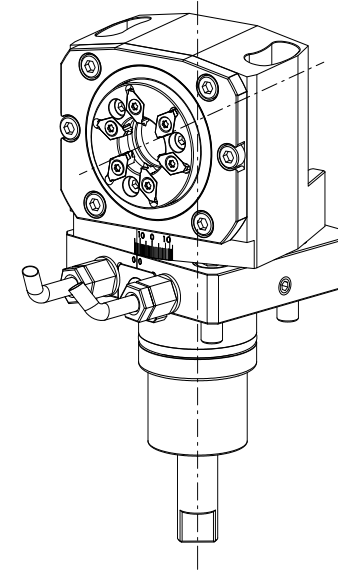
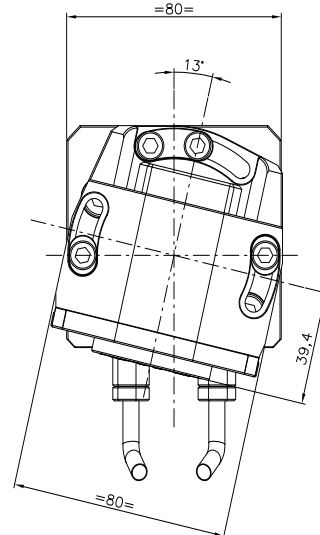
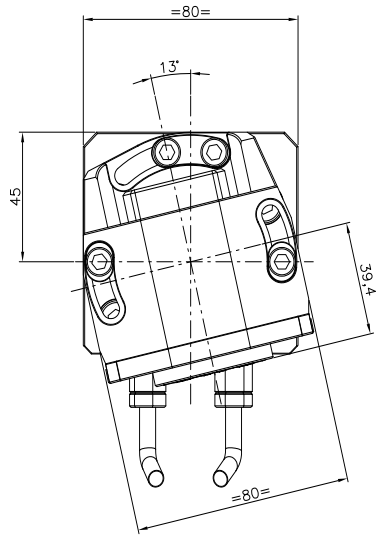
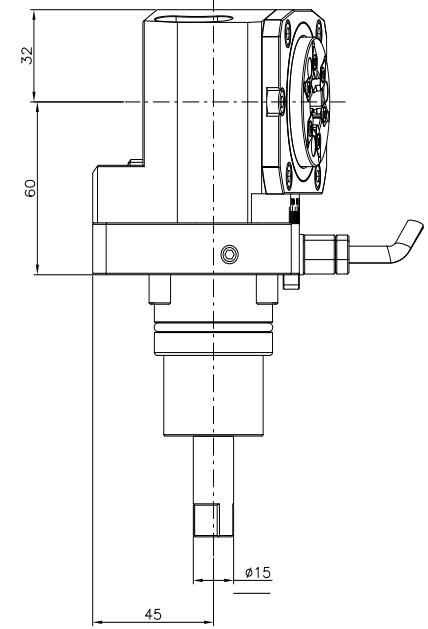
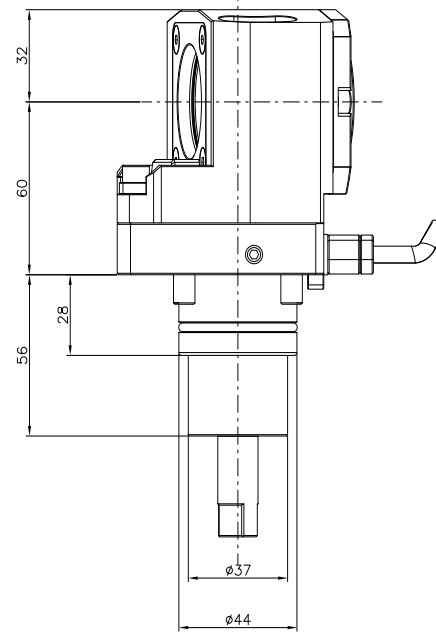
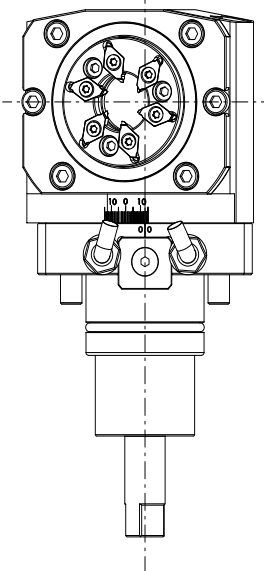
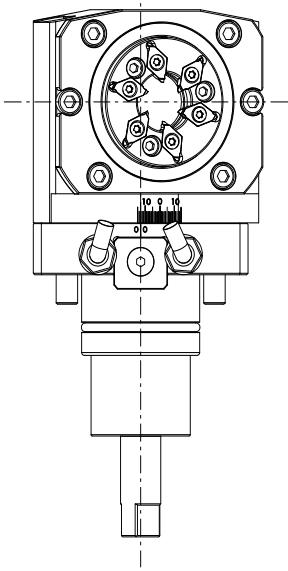
√ X=sovrametallo per rettifica in decimi di mm.

**MOTORIZZATO TURBOFILETTARE
NAKAMURA WT-100**

Alberti Umberto
Sede legale e amministrativa
via Garibaldi 117 - 20124 MILANO
Tel. 02 80000000 - Fax 02 80000001

Autore	Disegnato	Prodotto	Verificato	Rev. 01
Scale			1:1	

A Schema di Isere è vietata la riproduzione di questo disegno senza la nostra autorizzazione.

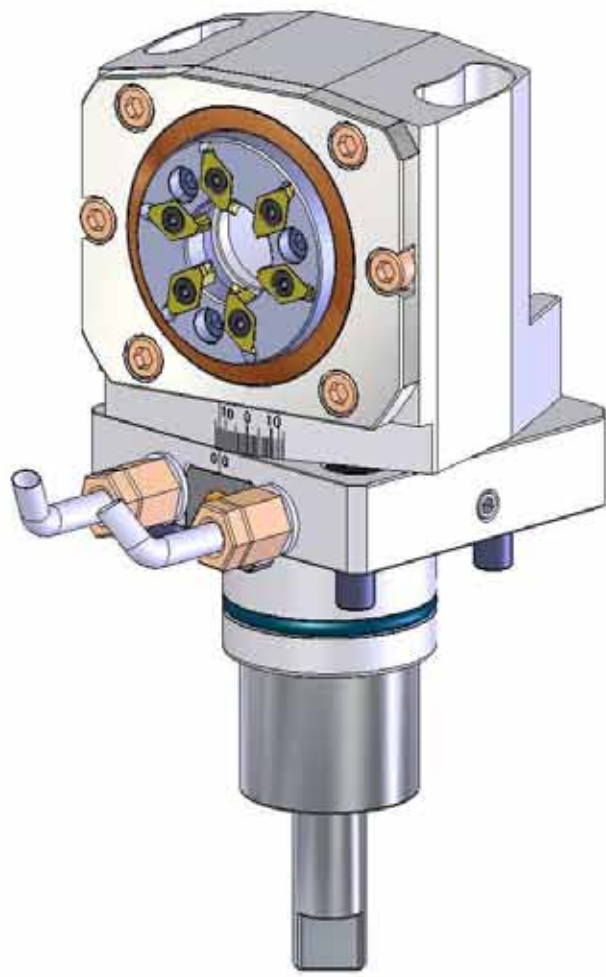


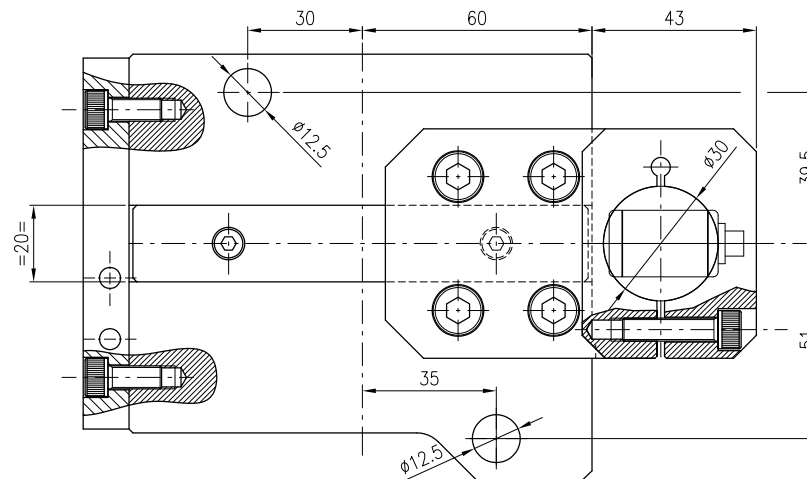
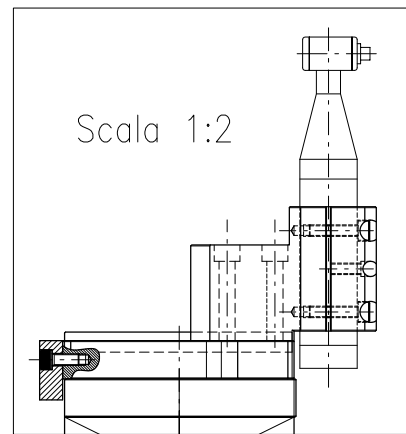
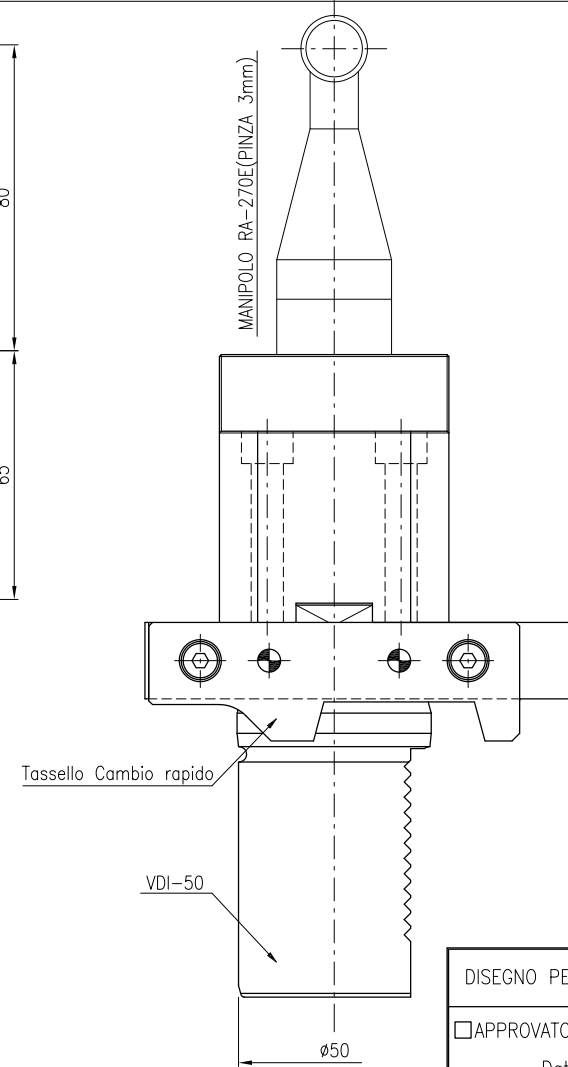
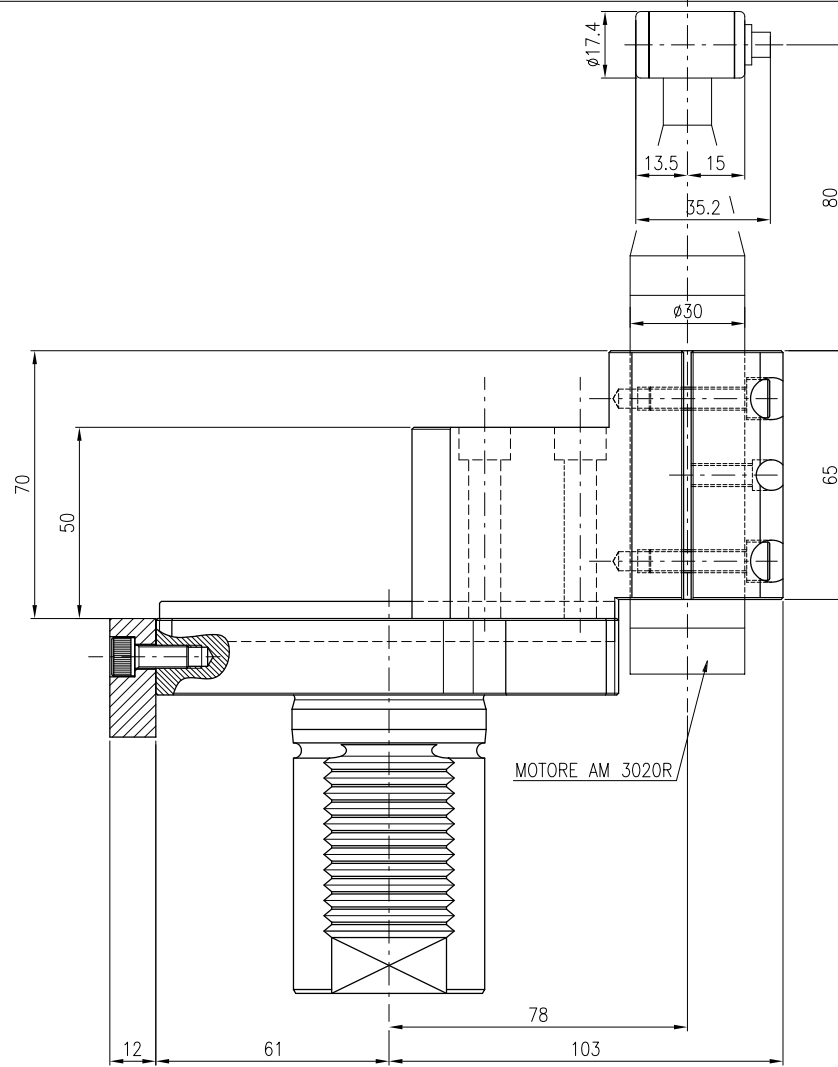
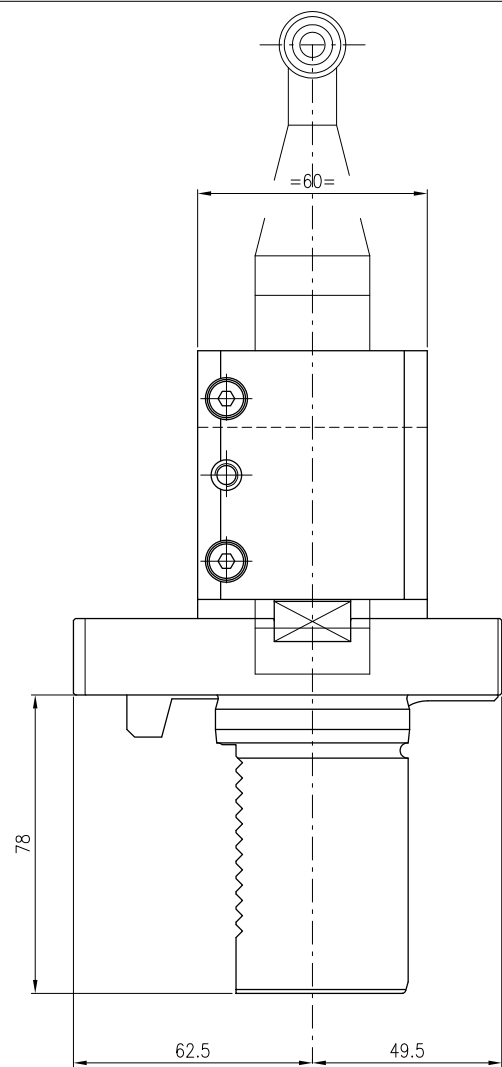
TECNICAL DATA

- Rt. 1:1,5
- RPM. max. 4.000 g/
- Max axial load 450 N
- Torque 10 Nm
- Adjustable tool drive from -13° to +13°
- Direction of rotation opposite to machine spindle

		Alberto Umberto Industrie Argomenti e Motorizzazioni Via EUGENIO IV° 2947 SARONNO - 37010 - ALBATEMBRE (CR)	
MOTORIZZATO TURBOFILETTARE NAKAMURA WT-100		Tel. 032 9672286 - 22 linee r.a.d. Fax 032 9672280	
MODELLO:	MATERIALE:	TRATTAMENTO:	DATA:
PRESSARE SPINILI:	TOLL. GENER.	SCALA:	RAZIONATA:
NUMERO DESIGNO - CODICE:		04-01-09	
A			

A termini di legge è vietata la riproduzione di questo disegno senza la nostra autorizzazione.





DISEGNO PER APPROVAZIONE.

APPROVATO
 Data:/..../....
 Firma

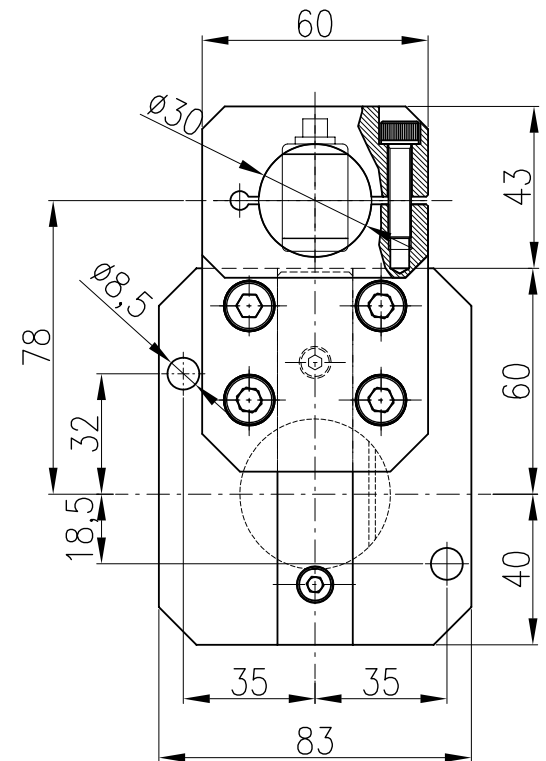
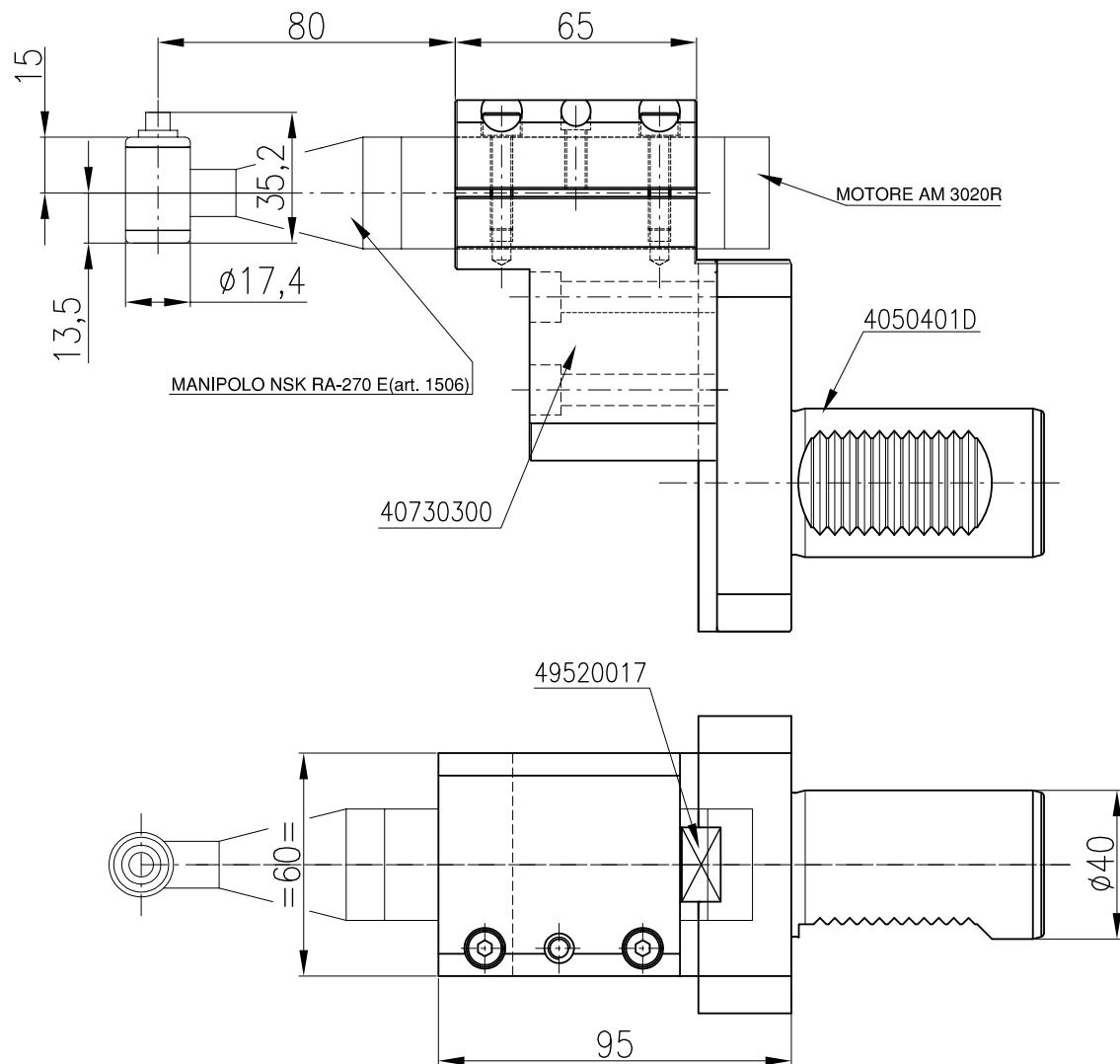
Note:

DA DEFINIRE
 Data:/..../....
 Firma

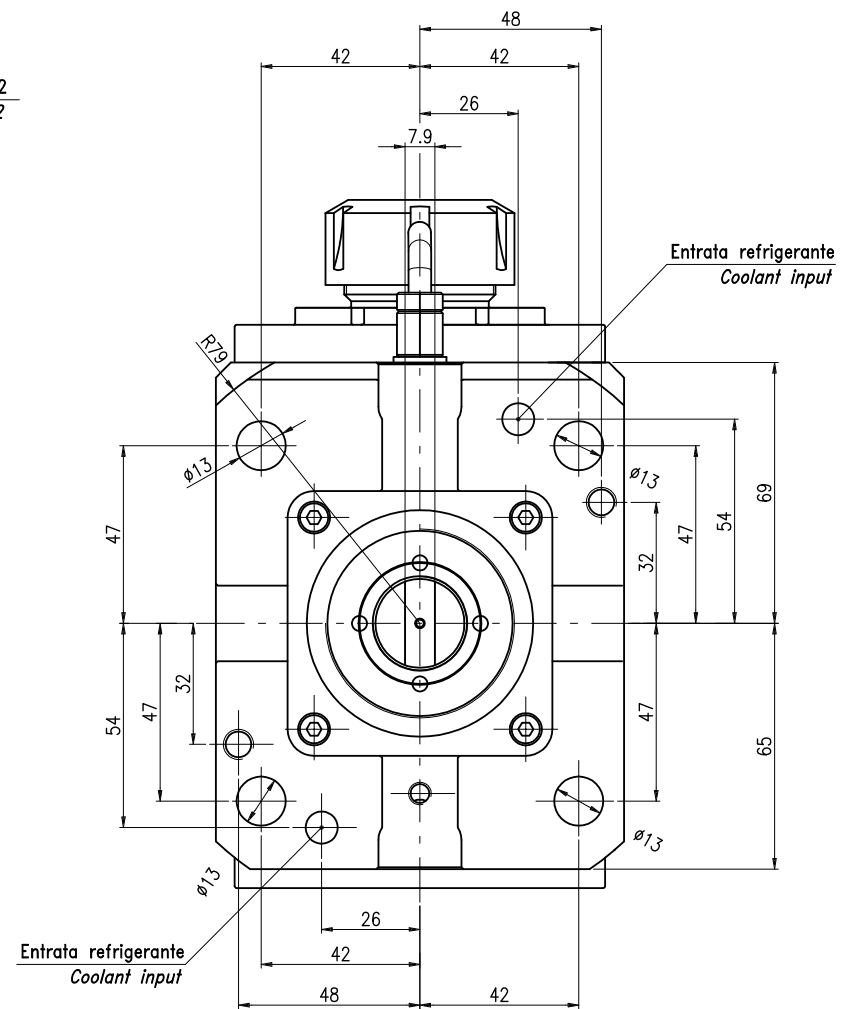
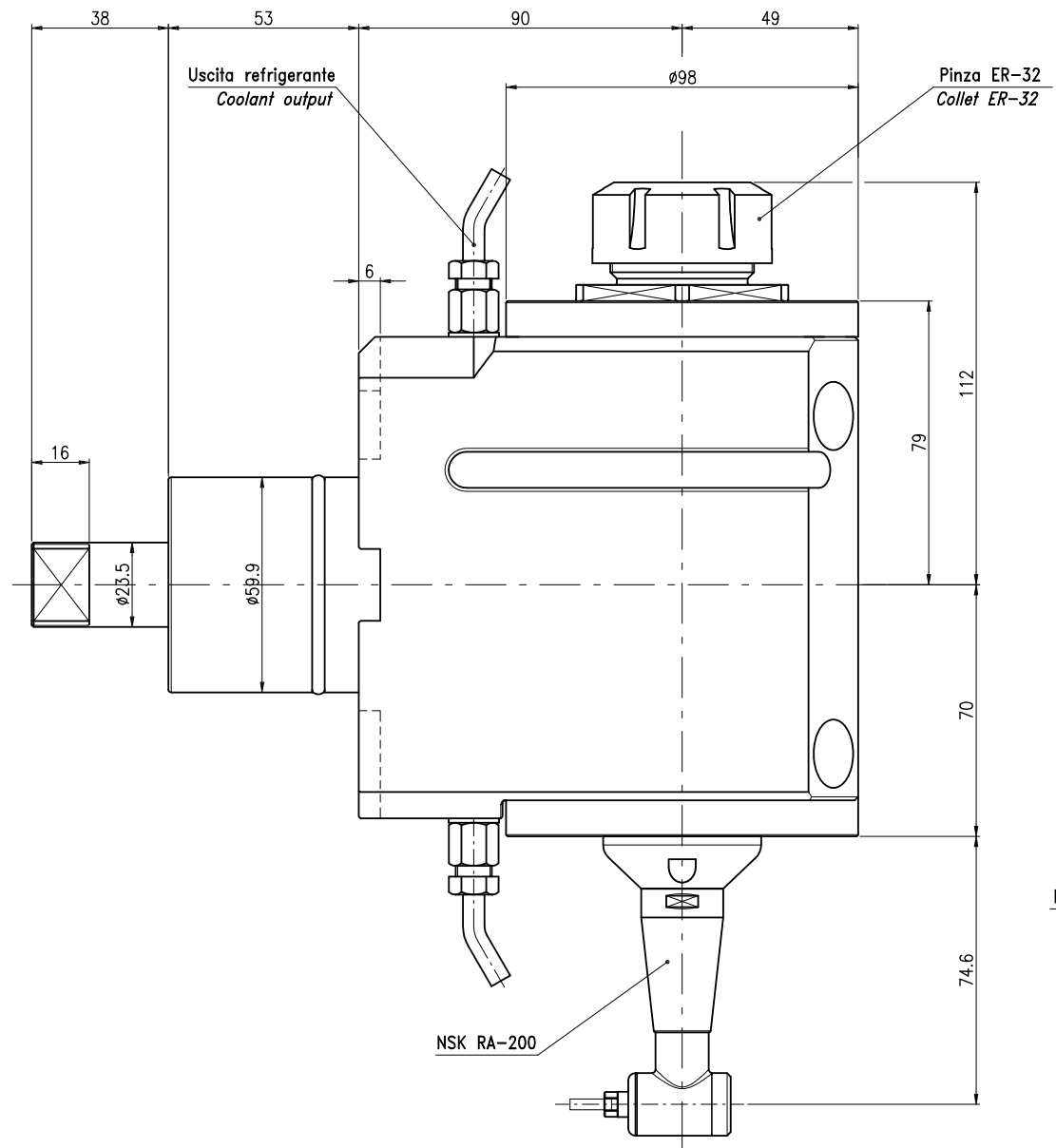
Note:

0,4x X-sovrametallo per rettifica in decimi di mm.

PORTA UT. FISSO $\phi 30$ PER EMAG VDI-50/MANIPOLO HSK				Alberti Umberto Teste angolari e motorizzazioni Via E.H.GRIEG n°7 21047 SARONNO(VA) e-mail: alberti@net-one.it Tel. (02) 96703586 (2 linee r.a.) FAX (02) 96703620	
MODIFICHE	MATERIALE	TRATTAMENTO		FIRMA	DATA
				<i>Valassini</i>	02.05.06
SMUSSARE SPICOLI	TOLL. GENER.	SCALA	RUGOSITA'	NUMERO DISEGNO - CODICE	
		1:1	✓✓✓✓	9.07.30.300	



$\nabla 0,4^x$ X=sovrametallo per rettifica in decimi di mm.									
PORTA UT. FISSO PER VDI-40/MANIPOLO NSK $\phi 30$							Alberti Umberto Teste angolari e motorizzazioni Via E.H.GREGG n°7, 21047 SARBONNO(VA) e-mail: alberti@net-one.it Tel. (02) 96703586 (2 linee r.a.) FAX (02) 96703620		
MODIFICHE	MATERIALE	TRATTAMENTO		FIRMA	VERIF.	DATA	RF. ORD.		
				<i>Valassori</i>		18-01-07			
SMUSSARE SPIGOLI	TOLL. GENER.	SCALA	RUGOSITA'				NUMERO DISEGNO - CODICE		
		1:1	$\checkmark \checkmark \checkmark \checkmark$				5.07.30.301		



H:\DWG\OFFERTE\M90-3.5-NL-SLIMLINE.dwg

0.4x
X-sovrametallo per rettifica in decimi di mm.

**M90-3.5 ER-32 PER MORI SEIKI NL
CON SLIM-LINE RA-200**

MODIFICHE		MATERIALE	TRATTAMENTO	FIRMA	VERIF.	DATA	RF. ORD.
				<i>Carnovali</i>		22-09-04	
SMUSSARE SPIGOLI	TOLL. GENER.	SCALA	RUGOSITA'	NUMERO DISEGNO - CODICE			
		1:1	✓ ✓ ✓	9.92.3.60.XX			

Alberti Umberto
Teste angolari e motorizzazioni
Via E.H.GRIEG n°7 21047 SARONNO(VA)
e-mail: alberti@nol-one.it
Tel. (02) 96703586 (2 linee r.a.) FAX (02) 96703620

A TERMINI DI LEGGE E' VIETATA LA RIPRODUZIONE DI QUESTO DISEGNO SENZA LA NOSTRA AUTORIZZAZIONE

